

PREVAIL

EXCLUSIVELY FOR OUR BENEFACTORS

WINTER 2018

WHEN EVERY MINUTE COUNTS

Nell and her mom say thank
you for their excellent care at
Vail Health's trauma center.

Read story on Page 2

LEVEL III TRAUMA CENTER PG 4 | NEW ED TECHNOLOGY PG 6

EAST WING PG 10 | YOUR GIFTS AT WORK PG 12

GREAT CARE IN A CRISIS

Valley family receives
first-rate emergency
medicine, times three.

On a sunny day last June, Pam Pennington stepped up onto a park bench to get a better look at the Go-Pro Mountain Games. Instead, she got a ride to Vail Health's Level III trauma center.

Pam had fallen off the bench, hitting the pavement hard. She was rushed to the Emergency Department with a shattered elbow and broken wrist.

"I don't remember much about being in the ED, but I do remember the staff was awesome," Pam says.

Within minutes of her arrival, she was examined by Dr. Gordon Hardenbergh, emergency specialist. He quickly consulted with Dr. Randy Viola, surgeon at The Steadman Clinic. Their conclusion—Pam needed reconstructive surgery on her elbow. She was immediately taken to the OR.

But that wasn't to be Pam's only ED visit last summer.



^ Thanks to you, Nell Pennington received great emergency care—twice.

2nd time: more outstanding treatment

In August, Pam's 17-year-old daughter, Nell, was driving down a mountain road and lost control. The car rolled multiple times. When Pam and her husband, Dan, arrived on the scene, the first thing they saw was an unrecognizable heap of metal. Pam says it was her worst nightmare.

Fortunately, Nell appeared to have no serious injuries. She was taken by ambulance to the Emergency Department. In addition to being shaken and banged up, Nell was diagnosed with a concussion.

"I was comfortable being back in the ED," Pam says. "I knew firsthand Nell would get great care."

Several members of the ED staff recognized the Penningtons from Pam's visit in June and quickly offered their support.

"Even though we weren't the only patients in the Emergency Department, we felt we had the staff's undivided attention," Pam says.

3rd round: more comfort and reassurance

Two days later, Pam was back in the ED with Nell, who was suffering headaches from the concussion.

"The staff was so reassuring and attentive to Nell, especially Dr. Gayle Braunholtz," Pam says. "Everyone was really great."

Today, Pam is healing nicely, continuing to rehab at Howard Head Sports Medicine. And Nell is as active as ever—skiing, rock climbing and riding her horse, Red.

"We're so fortunate to have big-city emergency care in the valley," Pam says. "We couldn't have been in better hands." She knows, times three.

"I don't remember much about being in the ED, but I do remember the staff was awesome."

— Pam Pennington, patient



^ Nell and Pam Pennington know firsthand the topnotch care in our ED.



WHEN THE UNEXPECTED HAPPENS WE'RE HERE

Our ED experts are ready for any crisis.

The sky's bright blue. There's a foot of new powder. It's a perfect ski day—until you hit that tree.

Thanks to our generous benefactors, excellent emergency care is nearby at Vail Health Hospital.

Nationally designated trauma center

Our Emergency Department has been designated a Level III trauma center by the American College of

Surgeons and the State of Colorado. This means our staff is trained to provide advanced emergency care 24/7. Vail Health has the only Level III trauma center in Eagle County.

Our expert team consists of board-certified emergency physicians, surgeons, nurses and physical therapists. They have the expertise to provide prompt assessment, resuscitation, trauma surgery and intensive care.

"I'm very proud of the way we care for patients," says Sarah Drew, RN, director of Emergency Services. "Not only do they receive great care, our emergency department length-of-stay is well below the national average."

This is extremely important since the ED is among the nation's top five busiest Level III trauma centers in hospitals with less than 250 inpatient beds. In fact, our Vail staff cared for 11,600 patients in 2016. An additional 1,500+ were treated at the Beaver Creek Medical Center during ski season. Caring for this many patients takes up to 45 staff.



^ Our ED physicians, like Dr. Gordon Hardenbergh, provide nationally recognized care.

Better, faster care in new ED

With your campaign support, a larger, state-of-the-art Emergency Department is being built in the new east wing. It will be located next to the main hospital entrance, providing easy access to emergency care. It will also offer new features that will enhance the patient experience, including:

- 19 beds (11 private rooms)
- Triage area
- On-site helipad, eliminating ambulance transport
- Centralized nurse station with direct line of sight to patients
- Radiology services
- Paramedic garage
- Specially designed psychiatric rooms
- Tele-psychiatry services
- Isolation/decontamination room

The new ED will increase patient safety and staff efficiency. So in addition to providing the very best care, our team can achieve its goal of a "no-wait" ED. A huge benefit when every minute counts.

"I'm very proud of the way we care for our patients."

— Sarah Drew, RN
Director of Emergency Services

NEW EQUIPMENT ADVANCES EMERGENCY CARE

Transporting injured skiers is safer, thanks to you.

Imagine. Your leg's broken. You're strapped to a ski patrol sled in the back of an SUV. When you get to the hospital, the sled's pushed onto a wooden platform in the parking lot. Still outside, you're moved to a stretcher. Finally, you're wheeled into the Emergency Department.

Because of our benefactors, injured skiers in the Vail Valley won't have to endure this ordeal any longer. Your gifts purchased four Stryker Power-PRO Cot and Power Load systems. This system makes traveling to the hospital safer and more comfortable.



"Now with the power cot and load system, we're able to provide even better emergency care for our patients."

*— Sarah Drew, RN
Director of Emergency Services*



Your gifts enhance patient experience

An injured skier can now be moved from the ski patrol sled at the mountain to the Power-PRO Cot, which is wheeled directly into the ED. This eliminates multiple transfers.

The system also provides greater safety, allowing the cot to be secured in the vehicle. There's no more jostling, causing further injury. And since the cot goes directly from the van to the ED, there's little exposure to the weather.

New equipment saves backs

The new system also benefits staff. The old transport method required EMTs to pull and push the sled out of the SUV. They had to lift the combined weight of the patient and sled, risking back injury.

^ *The new Power-PRO Cot allows direct transport from the slopes to the ED.*

Now with a push of a button, they can raise and lower the cot. And the system's hydraulics let the EMTs load and unload the cot without straining their backs.

You help provide free service

In addition to receiving great care, injured skiers are transported by Vail Health to the ED free of charge. This eliminates a costly ambulance bill. Last year, over 1,000 patients took advantage of this service.

Vail Health has offered complimentary transport for more than 25 years, because of our supporters.

EXTRAORDINARY GIFT FOR EXCELLENT CARE

New Emergency Department named to honor the Borgens.

“Everyone in our family has been to the Emergency Department, some two and three times. We almost have a home there,” Kathy Borgen says with a smile.

Recognizing topnotch medicine

Because of their excellent care, Kathy and her husband, Erik, recently made a significant gift to Vail Health and Steadman Philippon Research Institute. To recognize their generosity, the new Emergency Department will be named in their honor.

Giving back to the community

“Since coming to Vail in 1966, it’s been a central part of our lives, our children’s lives and now our grandkids’. Supporting Vail Health and SPRI is one way we can give back,” Erik explains.

The Borgens cite many reasons for



^ Kathy and Erik Borgen announce major gift to hospital and SPRI.

giving, like ensuring residents have topnotch medical facilities and our Hispanic community has specific medical services to meet their needs.

As a former research assistant, Kathy says there’s no better place to locate 21st Century research and health care facilities than Vail.

Erik adds, “When Vikings buried their fallen comrades, they sent them to Valhalla with all their earthly belongings. Since then, we’ve learned it’s important to leave things behind. Hopefully, we’re leaving something behind that will help generations to come.”

EVOLUTION OF MEDICINE ON VAIL MOUNTAIN



Vail Health and Vail Ski Patrol provide peak medicine.

When Vail Mountain opened in 1962, the ski patrol consisted of only a few patrolmen. Today their ranks have swelled to 93 patrollers, all certified by the National Ski Patrol.

In the early days, a patroller’s job was to get injured or sick skiers down the mountain as quickly as possible. But in 1972, that changed. After two skiers died of cardiac arrest in one day, patrollers were determined to prevent that from happening again.

They were trained to use a cardiac

kit. And in 1973, they stopped a heart attack for the first time on the slopes.

Expanding medical know-how

Now patrollers treat every type of medical emergency, stabilizing injured or ill skiers.

But the group is never satisfied. They continue to broaden their medical knowledge through ongoing training conducted by hospital staff.

Together, Vail Health and the ski patrol bring cutting-edge care to the slopes.

21ST CENTURY HOSPITAL OUT OF THE RUBBLE

East wing project begins with demolition.

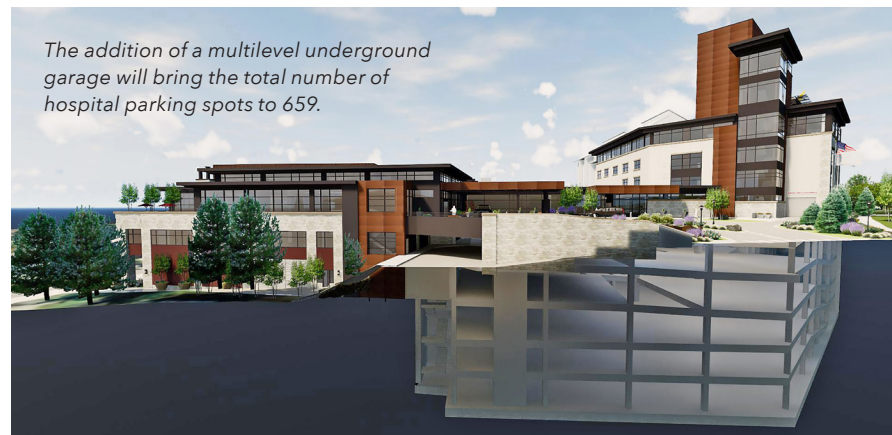
In January, the bricks of Vail Health Hospital's current east wing began coming down, thanks to your gifts to Together-The Campaign for a Healthy, Active Tomorrow.

Crews are currently dismantling the old structure and will demolish the parking garage this summer. All this makes way for a new 340,000-square-foot wing. Construction of the state-of-the-art building will begin late this year. The wing is scheduled for completion in 2020.

New wing to offer many benefits

The new facility will include:

- Main entrance off S. Frontage Rd.
- Multilevel underground garage
- Spacious main lobby
- Larger, state-of-the-art Emergency Department
- On-site helipad
- Outdoor terrace
- Expanded retail outlets: gift shop, pharmacy, Starbucks



Challenge to raise \$100 million

Your generosity to Together-The Campaign for a Healthy, Active Tomorrow is transforming Vail Health Hospital into the “hospital of tomorrow.” In addition, your campaign gifts are helping Steadman Philippon Research Institute discover innovative therapies. Thanks to you, campaign funds totaled over \$80 million on Jan. 1, 2018.

Our community deserves the best medical care. That's why Vail Health and SPRI have been challenged to raise \$100 million—\$25 million above the original goal.

These additional dollars will greatly impact area residents and visitors—providing more services and greater access to new treatments.

Every dollar you give makes Eagle County a healthier, more active community. For more information, go to spri.vailhealth.together.org.



^ The new 340,000-square-foot east wing is scheduled for completion in 2020.



^ The new entrance off South Frontage Road will provide patients and visitors easy access to the hospital.



^ The spacious main lobby will offer such amenities as a large retail pharmacy and gift shop, and a Starbucks coffee bar.

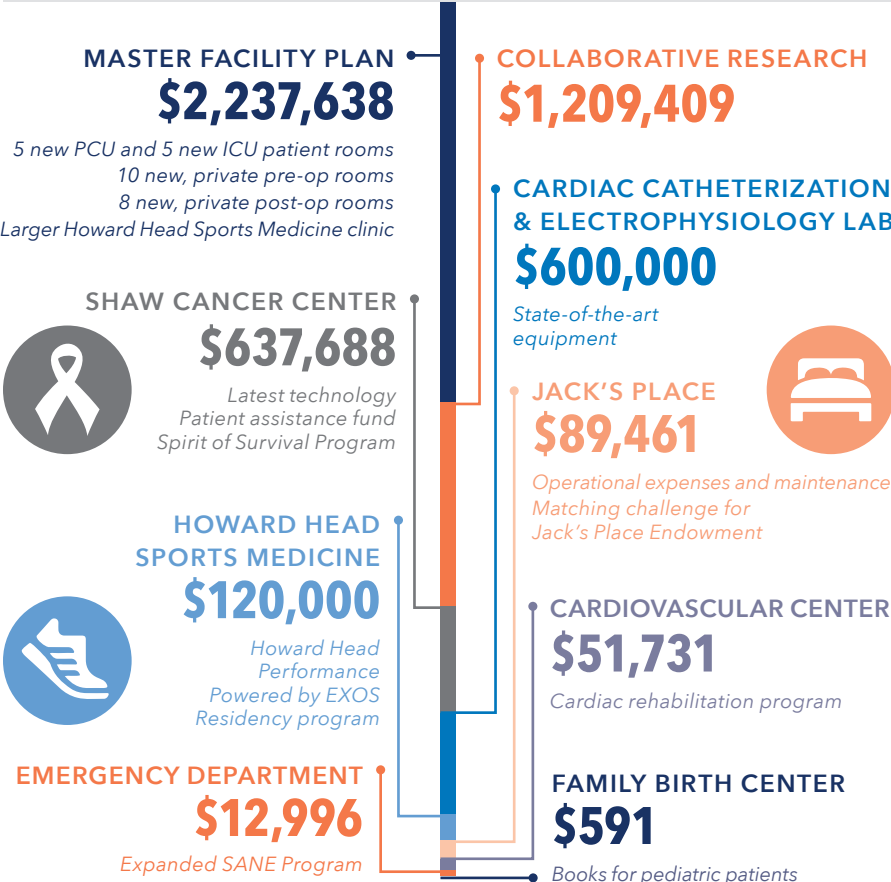
THANK YOU

YOUR GIFTS AT WORK



Because of your support, nearly \$5 million enhanced patient care and research at Vail Health in 2017. A huge thanks to you for your generosity.

\$4,959,514 in 2017



VAILHEALTH.ORG/GIVING
(970) 569-7766